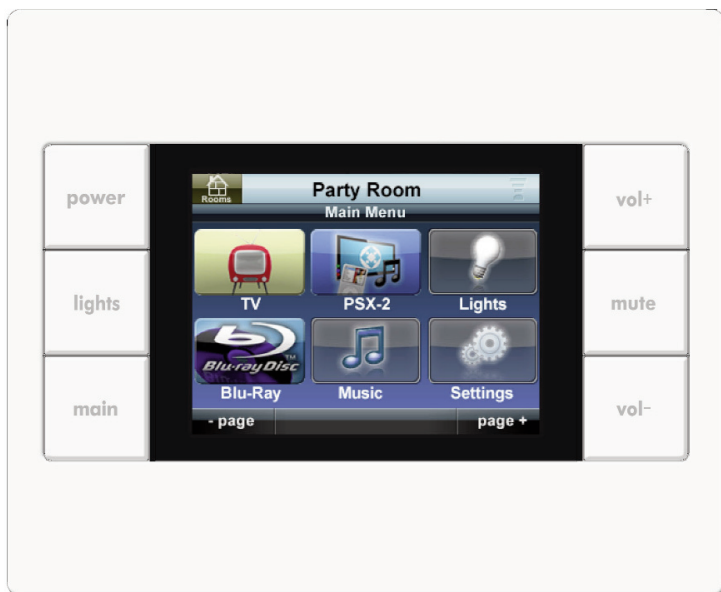




Owner's Manual

KP-2

In-Wall Touchscreen



KP-2 Owner's Manual ©2013 Universal Remote Control, Inc.

The information in this Owner's Manual is copyright protected. No part of this manual may be copied or reproduced in any form without prior written consent from Universal Remote Control, Inc.

UNIVERSAL REMOTE CONTROL, INC. SHALL NOT BE LIABLE FOR OPERATIONAL, TECHNICAL OR EDITORIAL ERRORS/OMISSIONS MADE IN THIS MANUAL.

The information in this Owner's Manual may be subject to change without prior notice.

ccGEN2 is a registered trademark of Universal Remote Control, Inc.

URC Control the Experience is a registered trademark of Universal Remote Control, Inc.

All other brand or product names are trademarks or registered trademarks of their respective companies or organizations.



*Universal Remote Control, Inc.
500 Mamaroneck Avenue, Harrison, NY 10528
Phone: (914) 835-4484 Fax: (914) 835-4532*

TABLE OF CONTENTS

Congratulations!	1
Features and Benefits	1
Parts List	1
KP-2 Product Description	2
Displaying the Settings Screen	3
Adjusting Sleep Settings	3
Button Light Settings	3
Setting Date and Time	3
Sound	4
Adjusting Brightness	4
System	4
Network	4
Factory Default	5
Exit	5
Frequently Asked Questions	6
Specifications	6
Limited Warranty Statement	7
End User Agreement	9
Federal Communication Commission Interference Statement	10
Declaration of Conformity	11

Congratulations!

You've purchased a unique synthesis of hardware and software engineering, the ccGEN2 KP-2 In-Wall Touchscreen. The KP-2 achieves a magnificent combination of power and flexibility by simplifying and automating the operation of even the most complex systems.

The KP-2 has the ability to control audio video components, energy management devices, multi-zone matrixes, PCs, iPods and whole house URC Lighting. It communicates over IP to the ccGEN2 CP-1 Central Processor.

The CP-1 "Central Processor" is required to make the KP-2 work. The combination of the KP-2 and CP-1 create a robust and powerful system to control the ccGEN2 product line and your home theater equipment.

Features and Benefits

Two-Way IP Control of Media on PCs and iPods

The high speed of the LAN enables the KP-2 to display lists of artists, albums or songs and to display the cover art of the selected album on the Now Playing screen of the remote control from the PSX-2 Personal Server.

Backlit Color LCD screen

The KP-2 has a programmable 3.5" color touch screen. When any button is pressed, the color LCD screen as well as the remote buttons, will light up.

No batteries to replace...Ever!

The KP-2 is powered over the ethernet cable it's connected to, so you never have to worry about replacing batteries.

Parts List

The KP-2 In-Wall Touchscreen includes:

- 1 - KP-2 Touchscreen
- 1 - Owner's Manual
- 4 - Screws for mounting to a wall box

KP-2 Product Description

The KP-2 consists of a 3.5" color touchscreen and 6 customizable buttons. Your whole house custom installer can request custom buttons specific to your ccGEN2 setup.

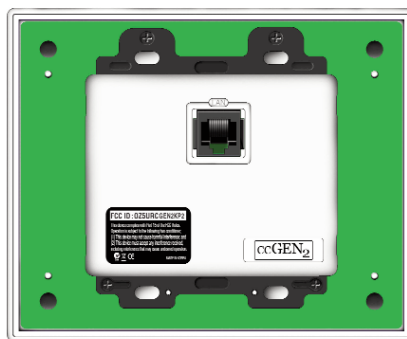


Power: Turn OFF the room you are viewing or press and hold for 3.5 seconds to turn OFF the whole house.

Lights: Press to control URC Lighting throughout your home.

Main: Press to view the main screen and control the ccGEN2 system.

Vol+, Vol- and Mute: Easily adjust the volume settings for any zone.



LAN port: This is connected by your Certified URC Dealer to your home network via Ethernet cable to a PoE (Power over Ethernet) switch.

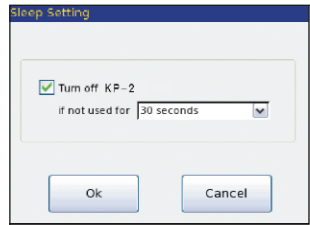
Displaying the Settings Screen

You can adjust the settings of the KP-2 whenever you like by pressing and holding both the MAIN and MUTE buttons for five seconds. When you do, the screen will change to the SETTINGS screen. If you do not press any button on the SETTINGS screen within 1 minute, the KP-2 will time out and automatically return to normal operation.



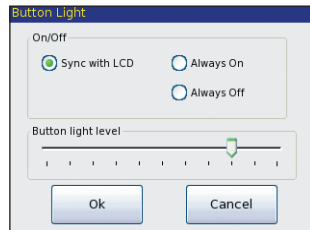
Adjusting Sleep Settings

Conserve energy by configuring the keypad to fall asleep after a specified amount of time. Select a time from the drop down list.



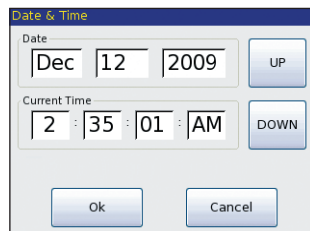
Button Light Settings

Conserve energy by opting to turn off the LED lighting behind the buttons.



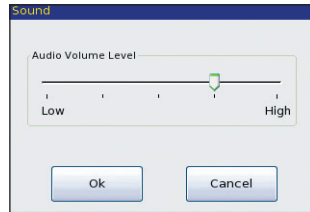
Setting Date and Time

Your KP-2 may have been previously programmed with the date and time. If you need to, you can adjust the time displayed by changing the settings on this screen. If you live in a part of the country that uses daylight savings time, check the box next to: "Automatically adjust clock for daylight saving".



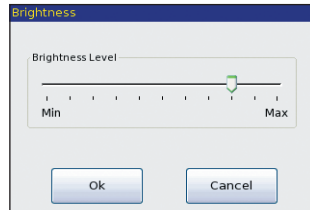
Sound

Your KP-2 may have been programmed to make sounds. This is optional, and some professional installers may prefer to keep it silent. However, you can adjust the volume to any level you like by touching and dragging the volume control here.



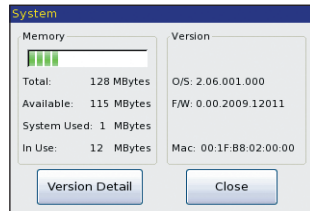
Adjusting Brightness

Simply touch and drag the brightness slider to the desired level.



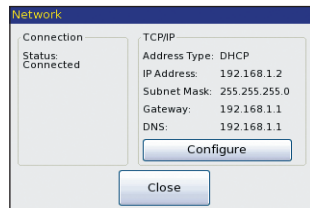
System

The System Information screen displays data about your KP-2's operating system, memory etc.



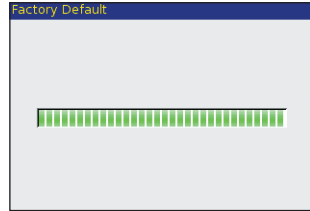
Network

The Network screen displays network information about your KP-2 and the connected network.



Factory Default

WARNING! Only use this button when instructed to by Technical Support. It resets the memory of the KP-2 to the factory condition. All your programming will be lost!



Exit

When you have finished adjusting Settings, simply tap the EXIT button to return to normal operation.

Frequently Asked Questions

How do I update the firmware?

Periodically there will be firmware updates for the KP-2. Since it is connected to your home network, your installer has the ability to update the firmware via Off-Site programming.

How do I reset a KP-2?

Remove the front cover of the KP-2. Use a pen or pointy device to depress the button and reset the unit.

How do I erase a KP-2?

Press and hold Main + Mute for 3 seconds then select the Factory Default button.

Specifications

Microprocessor: 190MHz RISC

Memory: 128MB Flash

Devices: Supports up to 255 Devices

Pages: Supports up to 255 Pages on each Device

Macro Capability: Up to 255 steps

Network: One 10/100 Ethernet port (PoE)

LCD : 3.5 inch (320x240)

Weight: 9.84 oz

Size: 5.75" x 4.7" x 1.8"

Power : Standard PoE Injector or PoE Switch (Purchased separately)

Limited Warranty Statement

1. Limited Warranty and Disclaimers

Universal Remote Control, Inc. ("URC") warrants that the URC equipment shall be free from defects in material and workmanship under normal usage for one (1) year from purchase when such is purchased from URC. **This limited warranty is valid only in the United States of America.** URC warrants that the software will substantially conform in any material respect to its functional specifications at the time of delivery. URC SHALL NOT BE LIABLE FOR OPERATIONAL, TECHNICAL OR EDITORIAL ERRORS AND/OR OMISSIONS MADE IN THE URC DOCUMENTATION. URC DOES NOT WARRANT THAT THE URC SOFTWARE IS BUG-FREE OR ERROR FREE OR THAT THERE ARE NO ERRORS/BUGS IN THE URC SOFTWARE.

URC warrants that at the time of purchase the URC equipment and the URC software complied with all applicable regulations and policies of the Federal Communications Commissions ("FCC") regarding electromagnetic interference caused by electronic/computing devices and to the extent that the URC equipment and/or the URC software fails to so comply, URC shall, at its own expense, take all reasonable measures to promptly cause such to comply.

URC equipment purchases from other than an authorized URC dealer or distributor are without warranty.

THIS LIMITED WARRANTY DOES NOT COVER TECHNICAL ASSISTANCE FOR HARDWARE OR SOFTWARE USAGE EXCEPT AS EXPRESSLY PROVIDED FOR HEREIN, THE EQUIPMENT, SOFTWARE AND DOCUMENTATION OF URC ARE SUPPLIED "AS IS" WITHOUT ANY WARRANTY, EXPRESS, STATUTORY OR IMPLIED, OF ANY KIND. TO THE MAXIMUM EXTENT PERMITTED BY APPLICABLE LAW, URC EXPRESSLY DISCLAIMS ALL WARRANTIES, EXPRESS, STATUTORY OR IMPLIED, INCLUDING BUT NOT LIMITED TO THE WARRANTIES OF MERCHANTABILITY AND FITNESS FOR A PARTICULAR PURPOSE. URC DOES NOT WARRANT, GUARANTEE, OR MAKE ANY REPRESENTATIONS REGARDING THE USE OF, OR THE RESULTS OF THE USE OF, THE EQUIPMENT, SOFTWARE OR DOCUMENTATION IN TERMS OF CORRECTNESS, ACCURACY, RELIABILITY OR OTHERWISE.

EXCEPT AS EXPRESSLY PROVIDED FOR HEREIN, TECHNICAL SERVICES ARE SUPPLIED "AS IS", WITHOUT ANY WARRANTY, EXPRESS, STATUTORY OR IMPLIED, OF ANY KIND. TO THE MAXIMUM EXTENT PERMITTED BY APPLICABLE LAW, URC EXPRESSLY DISCLAIMS ALL WARRANTIES, EXPRESS, STATUTORY OR IMPLIED, INCLUDING BUT

NOT LIMITED TO THE WARRANTIES OF QUALITY OR REASONABLE SKILL AND CARE, OR OUTCOME OR RESULTS.

WITHOUT IN ANY WAY LIMITING THE GENERALITY OF THE OTHER PROVISIONS HEREIN, WARRANTY DOES NOT COVER: (I) DAMAGE FROM MISUSE, NEGLIGENCE OR ACTS OF NATURE, (II) MODIFICATIONS, (III) INTEGRATION WITH THIRD PARTY CONTENT (IV) BEYOND THE WARRANTY PERIOD AND/ OR FAILURE TO FOLLOW URC WARRANTY CLAIM PROCEDURE.

The warranty limitations and warranty disclaimers may not apply to end user in whole or in part, where such are restricted or excluded by applicable law and such shall apply to the maximum extent permitted by applicable law.

In the event of any warranty claim, URC will, at its sole option, repair the URC equipment using new or comparable rebuilt parts, or exchange the URC equipment for new or rebuilt equipment. **In the event of a defect, these are the end user's exclusive remedies.**

All the URC equipment returned for service, exchange or repair require an RGA number. To obtain an RGA number, you must complete a Return Request Form which you may obtain by calling (914) 835-4484 or contacting URC at returnrequest@universalremote.com. To obtain warranty service, end user must deliver the URC equipment, freight prepaid, in its original packaging or packaging affording adequate protection to URC at 420 Columbus Avenue, Valhalla, NY 10595. It is end user's responsibility to backup any macro programming, artwork, software or other materials that may have been programmed into the unit. It is likely that such data, software, or other materials will be lost during service and URC will not be responsible for any such damage or loss. A dated purchase receipt, bill of sale, installation contract or other verifiable proof of purchase is required. For the URC equipment support and other important information, please visit URC's website available at www.universalremote.com or call the Customer Service Center at (914) 835-4484.

This limited warranty only covers the URC equipment issues caused by defects in material or workmanship during ordinary consumer use. It does not cover product issues caused by any other reason, including but not limited to product issues due to commercial use, acts of God, third-party installation, misuse, limitations of technology, or modification of or to any part of the URC equipment. This limited warranty does not cover the URC equipment sold as used, as is, refurbished, so called "B stock" or consumables (such as batteries). This limited warranty is invalid if the factory applied serial number has been altered or removed from the URC equipment. **This limited warranty specifically excludes the URC equipment sold by unauthorized resellers.**

With the exception of URC's IR-only, broad-based consumer remotes, none of URC's PC programmable remotes or any of our ccGEN2™ whole-house equipment are authorized for online internet sales. Buying URC's PC programmable remotes or any of our ccGEN2™ whole-house equipment online means buying equipment that does not have a URC's limited warranty. Such equipment is not eligible for URC tech support or software support, either.

2. URC'S Limitations of Liability

IN NO EVENT SHALL URC BE LIABLE FOR INDIRECT, SPECIAL, INCIDENTAL, EXEMPLARY, PUNITIVE OR CONSEQUENTIAL DAMAGES OF ANY KIND OR LOSS OF PROFITS OR BUSINESS OPPORTUNITY, EVEN IF URC IS ADVISED OF THE POSSIBILITY OF SUCH DAMAGES.

IN NO EVENT SHALL URC BE LIABLE FOR LOSS OF OR DAMAGE TO DATA, COMPUTER SYSTEMS OR COMPUTER PROGRAMS. URC'S LIABILITY, IF ANY, FOR DIRECT DAMAGES OF ANY FORM SHALL BE LIMITED TO ACTUAL DAMAGES, NOT IN EXCESS OF AMOUNTS PAID BY END USER FOR THE URC EQUIPMENT.

IN NO EVENT SHALL URC BE LIABLE FOR ANY EVENTS BEYOND ITS CONTROL, INCLUDING ANY INSTANCE OF FORCE MAJEURE. IN NO EVENT SHALL URC BE LIABLE FOR THE ACTS OR OMISSIONS OF END USER OR ANY THIRD PARTY.

THE LIMITATIONS OF LIABILITY MAY NOT APPLY TO END USER IN WHOLE OR IN PART, WHERE SUCH ARE RESTRICTED LIMITED OR EXCLUDED BY APPLICABLE LAW AND SUCH SHALL APPLY TO THE MAXIMUM EXTENT PERMITTED BY APPLICABLE LAW.

URC SHALL NOT BE HELD RESPONSIBLE FOR THE STATEMENTS MADE BY OTHERS.

SOME STATES OR JURISDICTIONS DO NOT ALLOW THE EXCLUSION OR LIMITATION OF INCIDENTAL OR CONSEQUENTIAL DAMAGES, OR ALLOW LIMITATIONS ON HOW LONG AN IMPLIED WARRANTY LASTS, SO THE ABOVE LIMITATIONS OR EXCLUSIONS MAY NOT APPLY TO END USER. THIS LIMITED WARRANTY GIVES END USER SPECIFIC LEGAL RIGHTS AND END USER MAY HAVE OTHER RIGHTS WHICH VARY FROM STATE TO STATE OR JURISDICTION TO JURISDICTION.

End User Agreement

The terms and conditions of the End User Agreement is available at www.universalremote.com/eua.php shall apply.

Federal Communication Commission Interference Statement

This equipment has been tested and found to comply with the limits for a Class B digital device, pursuant to part 15 of the FCC Rules. These limits are designed to provide reasonable protection against harmful interference in a residential installation. This equipment generates, uses and can radiate radio frequency energy and, if not installed and used in accordance with the instructions, may cause harmful interference to radio communications. However, there is no guarantee that interference will not occur in a particular installation. If this equipment does cause harmful interference to radio or television reception, which can be determined by turning the equipment off and on, the user is encouraged to try to correct the interference by one more of the following measures:

- ◆ Reorient or relocate the receiving antenna.
- ◆ Increase the separation between the equipment and receiver.
- ◆ Connect the equipment into an outlet on a circuit different from that to which the receiver is connected.
- ◆ Consult the dealer or an experienced radio/TV technician for help.

Warning!

Changes or modifications not expressly approved by the manufacturer could void the user's authority to operate the equipment.

Note : The manufacturer is not responsible for any Radio or TV interference caused by unauthorized modifications to this equipment. Such modifications could void the user's authority to operate the equipment.

FCC Caution

This device complies with Part 15 of the FCC Rules. Operation is subject to the following two conditions: (1) this device may not cause harmful interference, and (2) this device must accept any interference received, including interference that may cause undesired operation.

Any changes or modifications not expressly approved by the party responsible for compliance could void the authority to operate equipment.

Declaration of Conformity

Company Name : OH SUNG ELECTRONICS CO., LTD.
 Company Address : #181 GONG DAN-DONG, GUMI, GYEONG BUK,
 REPUBLIC OF KOREA
 Contact Information : Phone: +82-54-468-7281, Fax: +82-54-461-8368
 Brand Name : UNIVERSAL remote control
 Product Name : In-Wall Touchscreen
 Model Name : KP-2

This product herewith complies with the requirements of EMC Directive (2004/108/EC) issued by the Commission of the European Community

Compliance with these directives implies conformity to the following European Community

- EMC Directive
 - EN 55022
 - EN 55024
 - EN 61000-3-2
 - EN 61000-3-3

List of test reports and/or certificate verified compliance with the standards above

- EMC Directive
 - Report No.
 - Testing Laboratory : Gumi College EMC Center

Date of issue : _____ November 30, 2010 _____

Name and signature of authorized person : _____
 Quality Assurance Team
 OH SUNG ELECTRONICS CO., LTD.



500 Mamaroneck Avenue, Harrison, NY 10528

Phone: (914) 835-4484 Fax: (914) 835-4532

www.universalremote.com

